

**ALL- IN-ONE
ENHANCE KIT**

Perfect White

3000K

Kit # SCK2R-R30-2PWB

**RADIANCE LED
Seamless Beam of Light
Single Color 3000K WHITE**

Creates a warm and inviting atmosphere for focus or comfort.

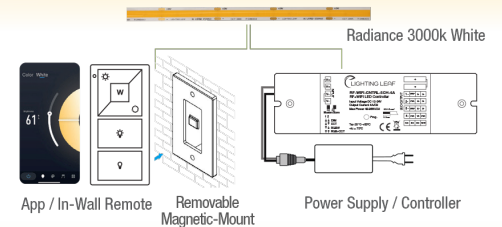
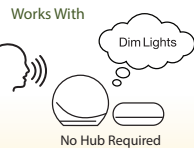
- Lighting layers
- Enhances design
- Additional functional light
- Detail for any space



- Cabinets & Shelving
- Architectural features
- Pathways & Coves
- TVs & Screens
- Mirrors & Displays
- Logo graphics & Art
- Acoustic treatment panels
- Bar & Wine displays



- KIT INCLUDES:**
- Controller
 - 200W Power Supply
 - 16.4 Feet LED Tape
 - RF Wireless Remote
 - Connectors (10 pcs)



Create new and innovative lighting solutions with in-wall control, IoT connected devices, or integrated systems!

SYSTEM FEATURES:

ALL-IN-1 DESIGN: For retrofit applications and new construction.

ULTRA-SLIM: (.75 inch) Controller and Power Supply allow concealed placement options for easier wiring and installs.

BUILT-IN CONNECTIVITY: Multiple technologies for flexible control as stand-alone or connected to a control system.

EASY SETUP: 1-button Push-to-Pair for Auto-discover quick connections. (No programming)

SAFE: Operates on low voltage DC circuits and wires making them safer and simpler to install.

LATEST LED TECHNOLOGY: Radiance Series - Seamless beam of light.

HIGH-DENSITY EMBEDDED LED: Produces enhanced results around high-reflective surfaces to ensure uniform radiant glow. (Such as high gloss tiles, polished concrete, metal, or mirrors)

ALL-IN-ONE ENTERTAIN KIT

Design Color



+ Extended color gamut includes shades of white

Kit # MCK2R-RRGB-4PWB

RADIANCE LED Seamless Beam of Light Multi-Color Premium RGB

Adds a unique and dynamic style for creativity or enjoying.

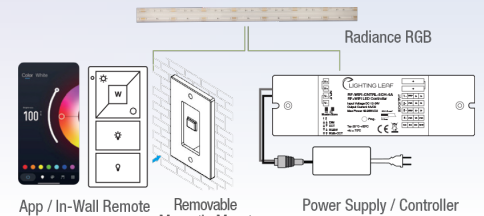
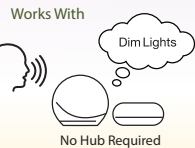
- Lighting layers
- Enhances design
- Additional functional light
- Detail for any space



- Architectural features
- Media rooms & Steps
- TVs & Screens
- Mirrors & Displays
- Logo graphics & Art
- Acoustic treatment panels
- Bar & Wine displays



- KIT INCLUDES:**
- Controller
 - 200W Power Supply
 - 16.4 Feet LED Tape
 - RF Wireless Remote
 - Connectors (10 pcs)



Create new and innovative lighting solutions with in-wall control, IoT connected devices, or integrated systems!

SYSTEM FEATURES:

ALL-IN-1 DESIGN: For retrofit applications and new construction.

ULTRA-SLIM: (.75 inch) Controller and Power Supply allow concealed placement options for easier wiring and installs.

BUILT-IN CONNECTIVITY: Multiple technologies for flexible control as stand-alone or connected to a control system.

EASY SETUP: 1-button Push-to-Pair for Auto-discover quick connections. (No programming)

SAFE: Operates on low voltage DC circuits and wires making them safer and simpler to install.

LATEST LED TECHNOLOGY: Radiance Series - Seamless beam of light.

HIGH-DENSITY EMBEDDED LED: Produces enhanced results around high-reflective surfaces to ensure uniform radiant glow. (Such as high gloss tiles, polished concrete, metal, or mirrors)