

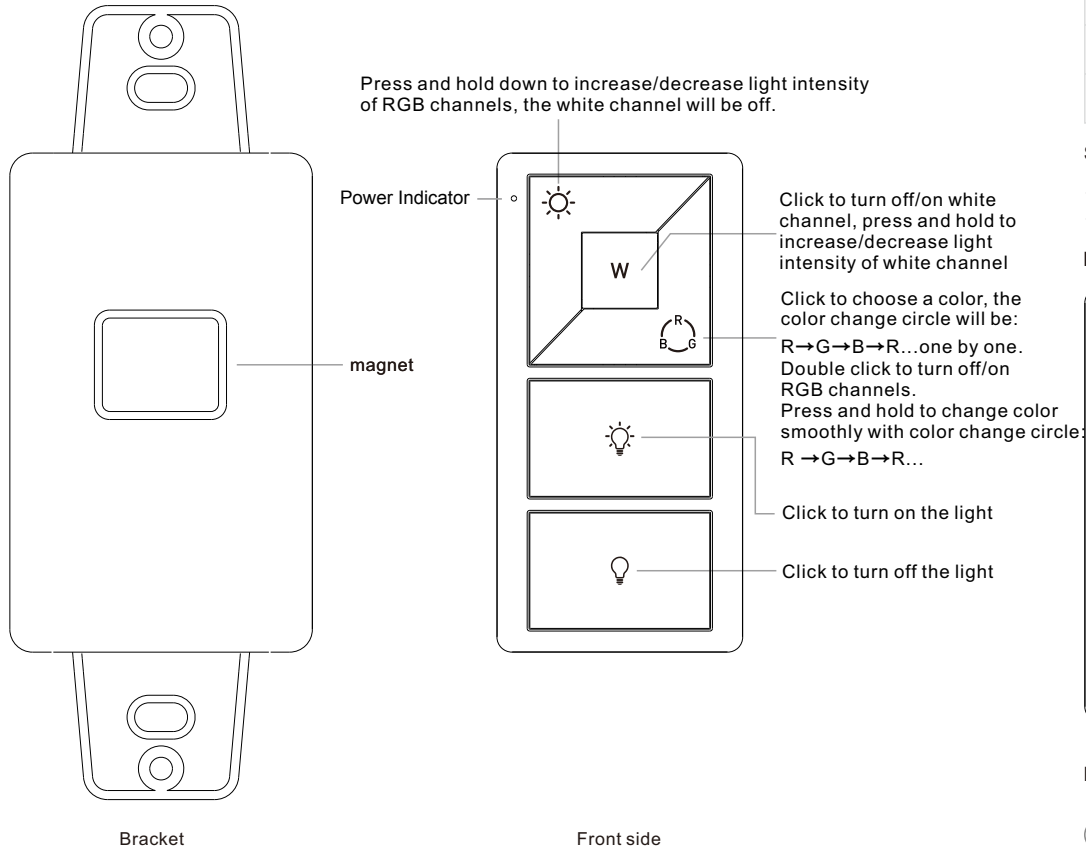
**Product Data**

Output	RF signal
Operation Frequency	916.5MHz
Power Supply	3V(CR2032 battery)
Operating temperature	0-40°C
Relative humidity	8% to 80%
Dimensions	66x32.5x8.9mm

- Set controller to RGBW mode
- Controller can be paired with up to 8 different remotes
- Waterproof grade: IP20

**Important:** Read All Instructions Prior to Installation

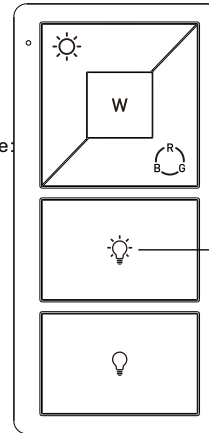
**Function introduction**



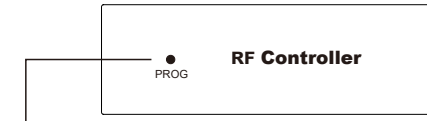
**Safety & Warnings**

- This device contains a button lithium battery that shall be stored and disposed properly.
- DO NOT expose the device to moisture.


**Pair with RF controller**



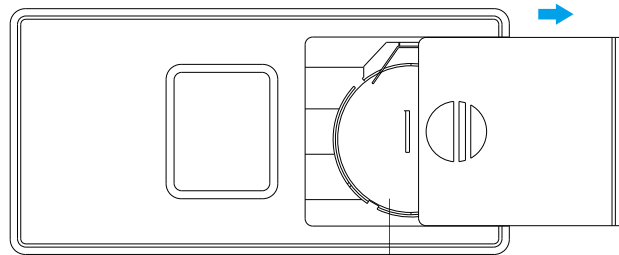
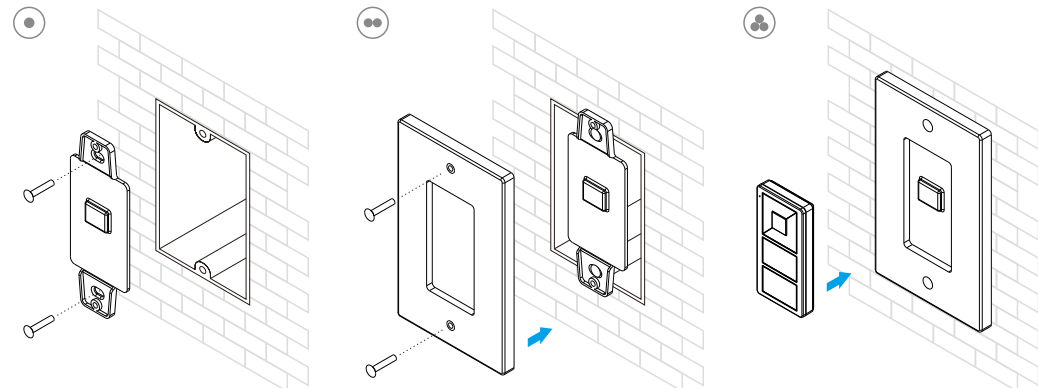
**Step 1:** Connect RF controller according to its instructions and wiring diagram. Power on RF controller. (RF-WIFI-CNTRL-5CH-4A)



**Step 2:** Click the "PROG" button on RF controller or re-power the controller on/off three times continuously to set it into pairing mode.

**Step 3:** Click any button on the remote (e.g. button ) , LED lights connected to the RF controller will flicker once indicating the receiver is paired with the remote.

**Installation**



**Note:** Before the first use, please remove the protective film on the battery.

Back side